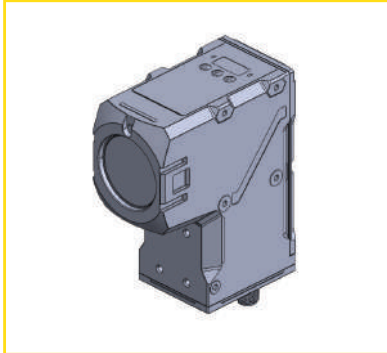




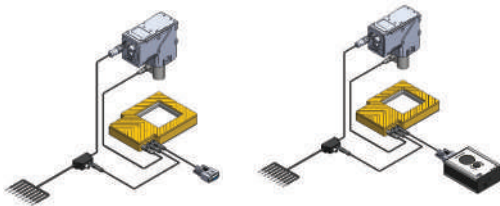
Scan or Click the QR code for more information

Keyence Smart Camera

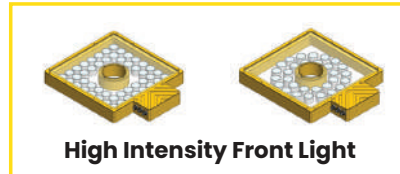


Smart Camera model required for compatibility check.
For inquiries, please contact quotation@tms-lite.com

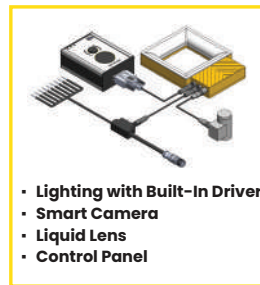
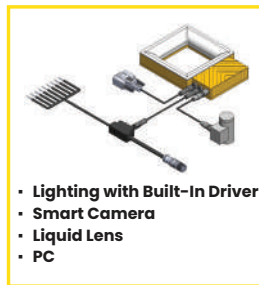
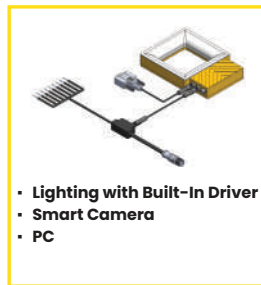
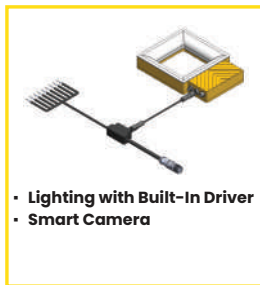
Wiring Concept



Lighting with Built-In Driver

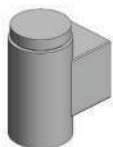


Application



Optional

Liquid Lens



Scan or Click the QR code for liquid lens information

Control Panel



Scan or Click the QR code for control panel information

Features

- Selectable modes (Constant & Overdrive)
- Bundled with lighting
- Dedicated connector for direct interfacing with the Keyence Smart Camera / Liquid lens
- Communication with PC or control panel

Advantages

- Lightweight and portable
- Space-efficient design
- Supports overdrive to increase current in overdrive mode
- Reduces required cabling

Benefits

- Compact and lightweight
- Easy to use
- Suitable for applications in tight spaces, enabling a more streamlined and tidy installation