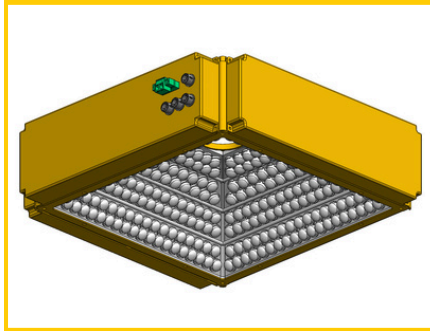




Scan or Click the QR code for more information



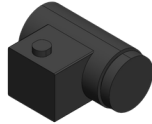
## Specifications

Type	Digital Controller
Series	Driver Series
Dimension	
Communication Type	RS232
Controller Supply Voltage	24VDC
Output Current	1A / Channel
Lighting (Input & Output Voltage)	Based on controller supply voltage
Digital Input	2
Digital Output	3
No. of channel	16 Channels
Mode	Constant & Strobe
Strobe Width	0 - 9,999ms (1ms / step)
Trigger Delay	≈ 1ms

## Optional



Custom Camera

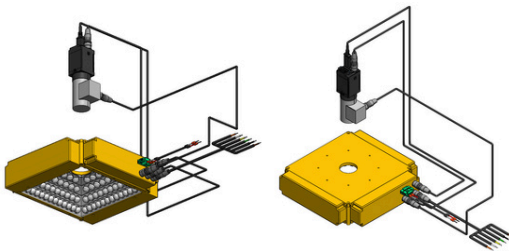


Liquid Lens



Scan or Click the QR code for liquid lens information

## Application



## Connector Pinout

### COMMUNICATION HIROSE 4PIN



BROWN	PIN 1	RXD
WHITE	PIN 2	TXD
BLUE	PIN 3	GND
BLACK	PIN 4	N/A

### EXTERNAL IO HIROSE 6PIN



BROWN	PIN 1	IN1+
BLACK	PIN 2	IN1-
GREEN	PIN 3	OUT1+
YELLOW	PIN 4	OUT1-
WHITE	PIN 5	OUT2+
ORANGE	PIN 6	OUT2-

### CAMERA HIROSE 5PIN



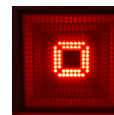
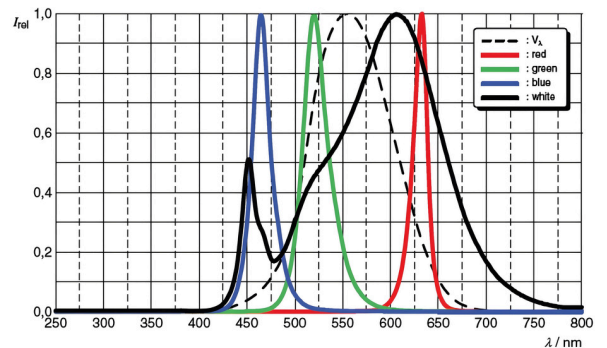
BROWN	PIN 1	REF V+
WHITE	PIN 2	OPTO_OUT
BLUE	PIN 3	OPTO_IN
BLACK	PIN 4	REF_GND
GRAY	PIN 5	GND

### LIQUID LENS HIROSE 7PIN

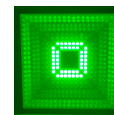


RED	PIN 1	5V
BLACK	PIN 2	RX
GREEN	PIN 3	TX
YELLOW	PIN 4	GND
WHITE	PIN 5	GND
ORANGE	PIN 6	N/A
BLUE	PIN 7	N/A

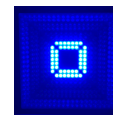
## LED Wavelength



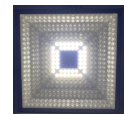
Red



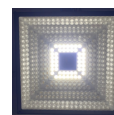
Green



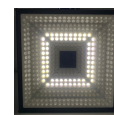
Blue



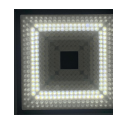
White



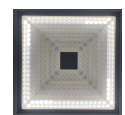
15°



30°



45°



60°

## Features

- Square light with 4 angles: **15°, 30°, 45°, 60°**
- RGBW colors
- Built-in driver
- Direct connection to camera and liquid lens

## Advantages

- 4 colors at 4 angles in one light
- For angle measurement, color verification, and reflective surface inspection
- Minimizes cabling requirements

## Benefits

- Saves time and reduces costs
- Increase efficiency
- Offers flexible usage
- Compact design for a streamlined, tidy installation