



Scan or Click the QR code for more information



Specifications

Type	Digital Controller
Series	Driver Series
Dimension	135 x 78 x 29mm
Communication Type	RS232
Controller Supply Voltage	24VDC
Output Current	1A (CON), 2A (STB)
Lighting (Input & Output Voltage)	Based on controller supply voltage
Digital Input	2
Digital Output	1
No. of channel	1 Channel
Mode	Constant, Overdrive
Strobe Width	0 - 10ms (0.01ms / step)
Trigger Delay	≤ 30us

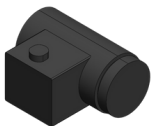
Optional



Control Panel



Scan or Click the QR code for Control Panel information

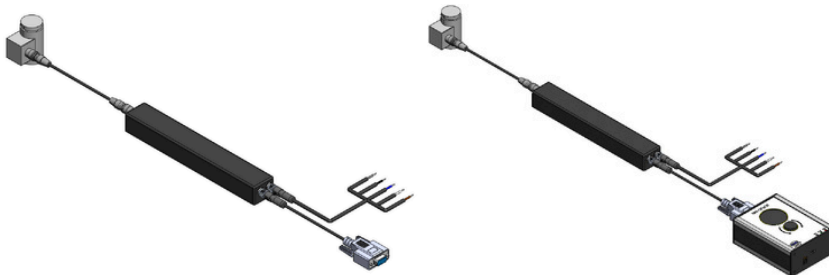


Liquid Lens



Scan or Click the QR code for Liquid Lens information

Application



Connector Pinout

LIQUID LENS HIROSE 7PIN



RED	PIN 1	5V
BLACK	PIN 2	RX
GREEN	PIN 3	TX
YELLOW	PIN 4	GND
WHITE	PIN 5	GND
ORANGE	PIN 6	N/A
BLUE	PIN 7	N/A

COMMUNICATION M8 4PIN



BROWN	PIN 1	RXD
WHITE	PIN 2	TXD
BLUE	PIN 3	GND
BLACK	PIN 4	5V

POWER IO M8 5PIN



BROWN	PIN 1	24V
WHITE	PIN 2	OVERDRIVE
BLUE	PIN 3	GND
BLACK	PIN 4	CONSTANT
GRAY	PIN 5	OUTPUT

Features

- Selectable modes (Constant & Overdrive)
- Dedicated connector for direct interfacing with the Smart Camera / Liquid Lens
- Communication with PC or Control Panel

Advantages

- Lightweight and portable
- Space-efficient design
- Supports overdrive to increase current in overdrive mode
- Reduces required cabling

Benefits

- Compact and lightweight
- Easy to use
- Suitable for applications in tight spaces, enabling a more streamlined and tidy installation