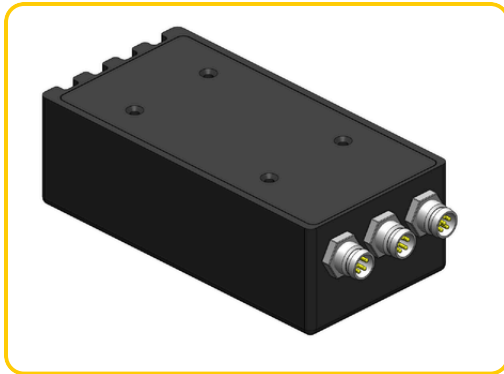




Scan or Click the QR code for more information



Specifications

Type	Digital Controller
Series	Driver Series
Dimension	135 x 78 x 29mm
Communication Type	RS232
Controller Supply Voltage	24VDC
Output Current	1A (CON), 2A (STB)
Lighting (Input & Output Voltage)	Based on controller supply voltage
Digital Input	2
Digital Output	1
No. of channel	1 Channel
Mode	Constant, Overdrive
Strobe Width	0 - 10ms (0.01ms / step)
Trigger Delay	≤ 30us

Optional

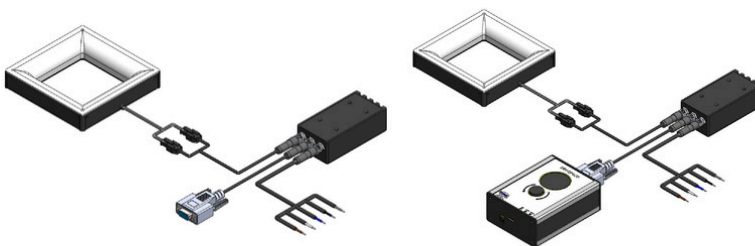


Control Panel



Scan or Click the QR code for Control Panel information

Application



Connector Pinout

EXTERNAL LIGHTING M8 3PIN

BROWN	PIN 1	24V
BLUE	PIN 3	CONSTANT
BLACK	PIN 4	OVERDRIVE

COMMUNICATION M8 4PIN

BROWN	PIN 1	RXD
WHITE	PIN 2	TXD
BLUE	PIN 3	GND
BLACK	PIN 4	5V

POWER IO M8 5PIN

BROWN	PIN 1	24V
WHITE	PIN 2	OVERDRIVE
BLUE	PIN 3	GND
BLACK	PIN 4	CONSTANT
GRAY	PIN 5	OUTPUT

Features

- Selectable modes (Constant & Overdrive)
- Dedicated connector for direct interfacing with the Smart Camera / Liquid Lens
- Communication with PC or Control Panel

Advantages

- Lightweight and portable
- Space-efficient design
- Supports overdrive to increase current in overdrive mode
- Reduces required cabling

Benefits

- Compact and lightweight
- Easy to use
- Suitable for applications in tight spaces, enabling a more streamlined and tidy installation