



Scan or Click the QR code for more information



Specifications

Type	Digital Controller
Series	Driver Series
Dimension	
Communication Type	RS232 <i>(Applicable for DRV-2CH only)</i>
Controller Supply Voltage	5VDC

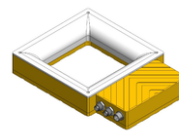
Supported Controller



DRV-2CH



Scan or Click the QR code for DRV-2CH information

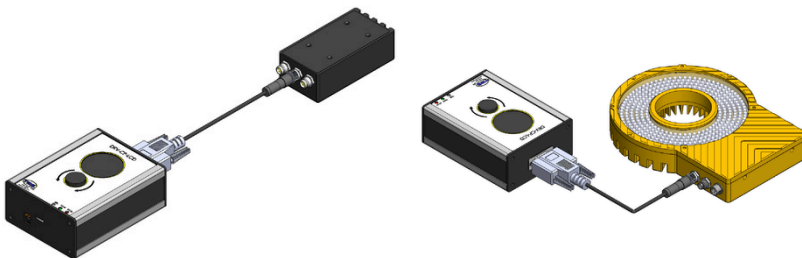


Built-In-Driver Series

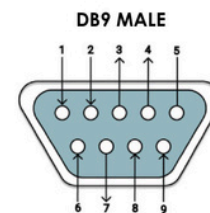


Scan or Click the QR code for Built-in Driver information

Application



Connector Pinout



PIN 1	N/A
PIN 2	RX
PIN 3	TX
PIN 4	N/A
PIN 5	GND
PIN 6	N/A
PIN 7	N/A
PIN 8	N/A
PIN 9	5V

Features

- Rotary knob controller with a built-in round display
- Direct control via the DRV-2CH series controller
- Built-in power supported through RS232

Advantages

- Rotary knob control
- Built-in display for easy viewing
- No PC required for operation
- Supports low-voltage power-up

Benefits

- Compact and robust design
- Plug-and-play
- Easy to carry and handle
- Standalone operation
- Suitable for testing and troubleshooting