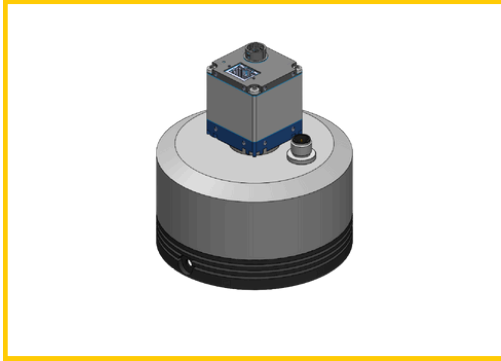


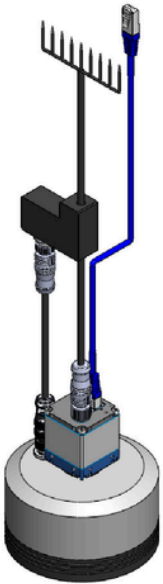


Scan or Click the QR code for more information



ALL IN ONE
Camera, Liquid Lens, Lighting

Application



Connector Pinout

CONTROLLER M12 8PIN

PIN 1	24V
PIN 2	IN 1
PIN 3	GND
PIN 4	IN 2
PIN 5	OUT
PIN 6	5V
PIN 7	RX
PIN 8	TX



Specifications

Type	Driver Module
Series	DM Series
Dimension	
Electrical Specs	
Supply Voltage	24VDC
Max Power Consumption	12W
Input / Output	3 Digital Output (From Camera)
Camera Specs	
Communication Method	GigE (RJ45 Connector) (GenICam Standard) GEN<i>i>CAM
Megapixel	5 MP
Sensor Format	2/3"
Lighting Controller Specs	
Lighting Channels	2 Channels
Lighting Mode	Constant & Strobe
Strobe Width	0 - 99.99ms (0.01ms / step)
Trigger Delay	<= 30us

Lighting CCT

Color Temp [K]	
6500	3500
5000	3000
4500	2700
4000	

Features

- Tunable white
- Selectable modes (Constant & Strobe)
- Bundled with lighting, camera and liquid lens

Advantages

- Tunable white light under one lighting
- Lightweight and portable
- Space-efficient design
- Reduces required cabling

Benefits

- Saves time and reduces costs
- Increase efficiency
- Offers flexible usage
- Compact design for a streamlined, tidy installation